

# Lab to Label

Translational Research at the  
Future Fibre Facility



# Core Competencies Across the Value Chain

- **Fibre, yarn and textile design**

- Novel wet and melt spun filaments
- Conductive fibres and textiles
- Nanofibres and short polymer fibres

- **Textile treatment and colouration**

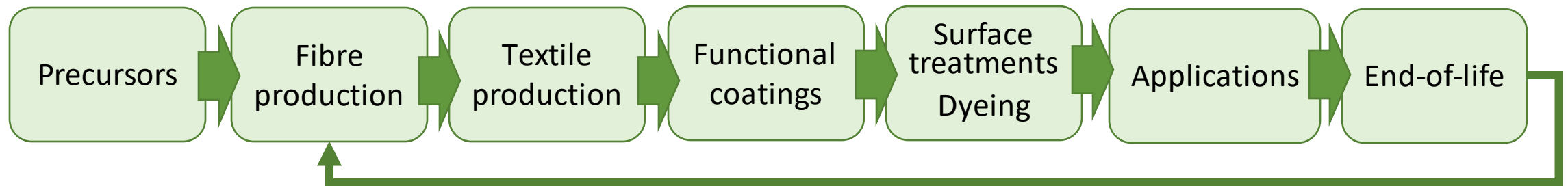
- Advanced treatment methods
- Treatment chemistries

- **Applications**

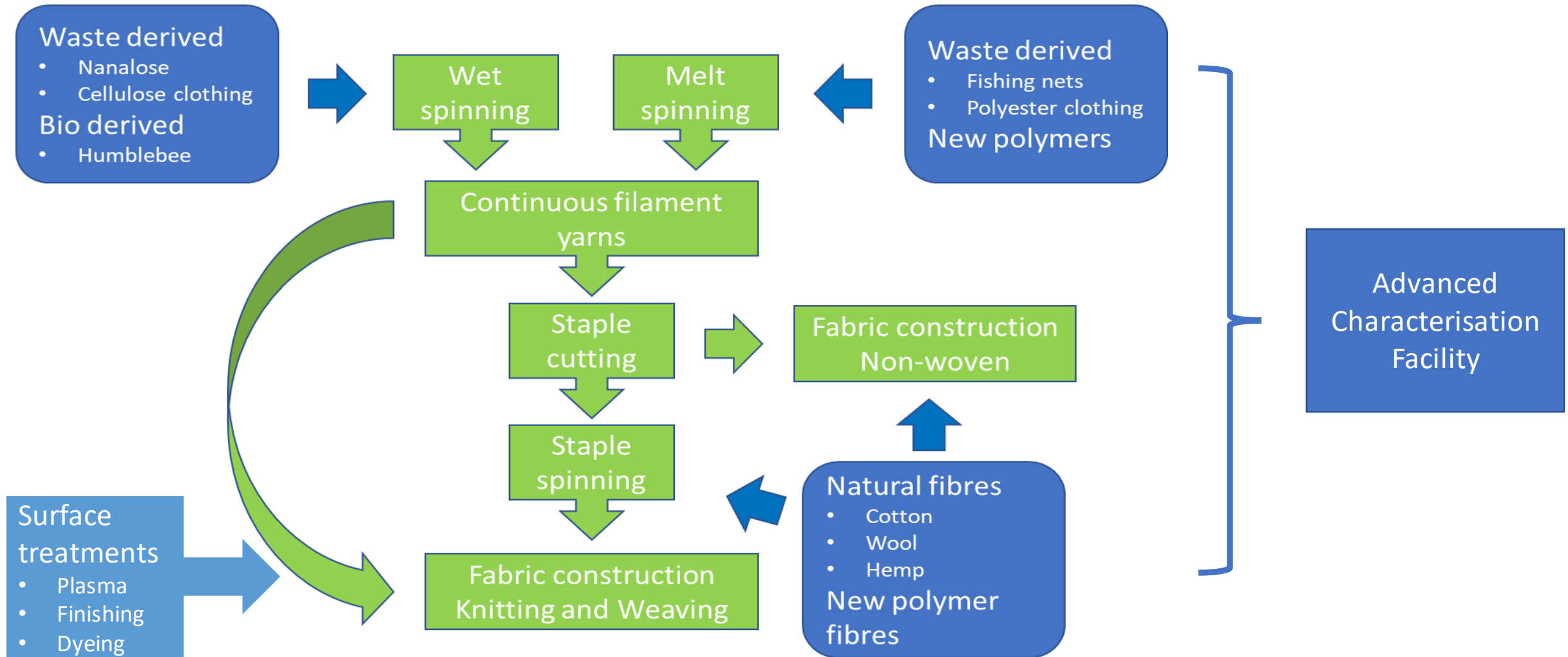
- Protective clothing
- Apparel and hospitality
- Membranes, energy, etc.

- **End-of-Life**

- Upcycling avenues for supply chain waste
- Advanced fibre regeneration



# Future Fibres Facility



FUTURE FIBRES GROUP



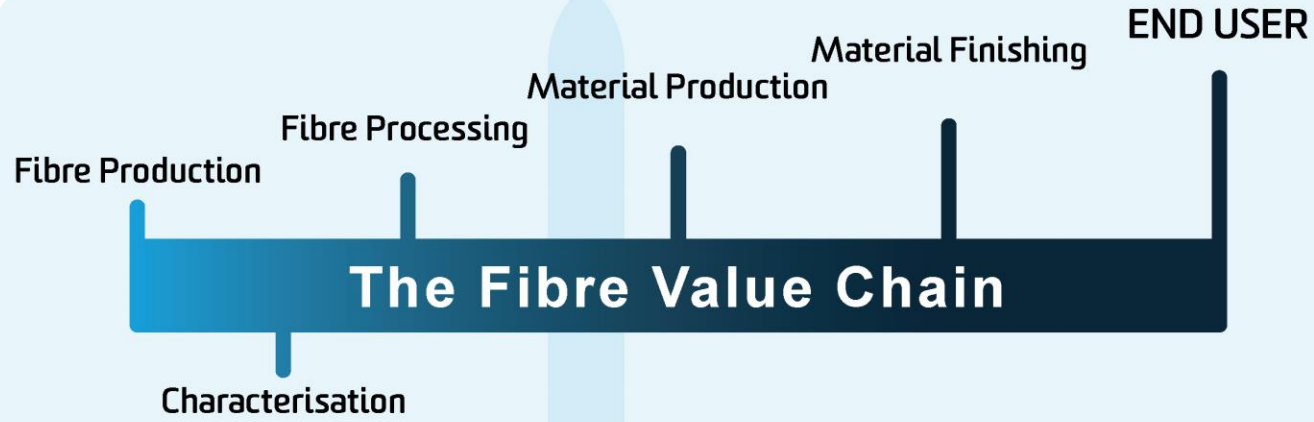
ARC Research Hub for FUTURE FIBRES

Fibre technologies that make a material difference.



FUTURE FIBRES FACILITY

# Future Fibres Facility

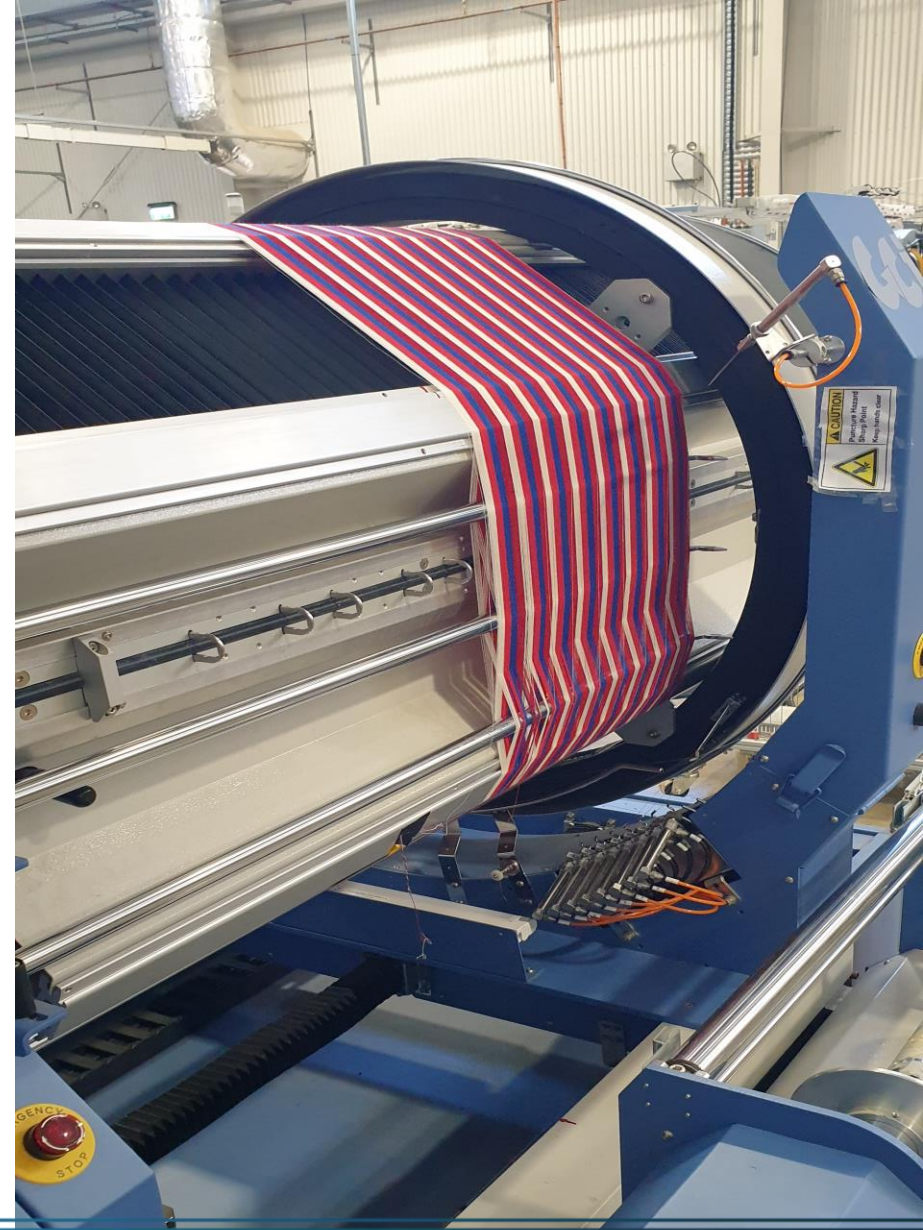


Characterisation



## LAB to LABEL

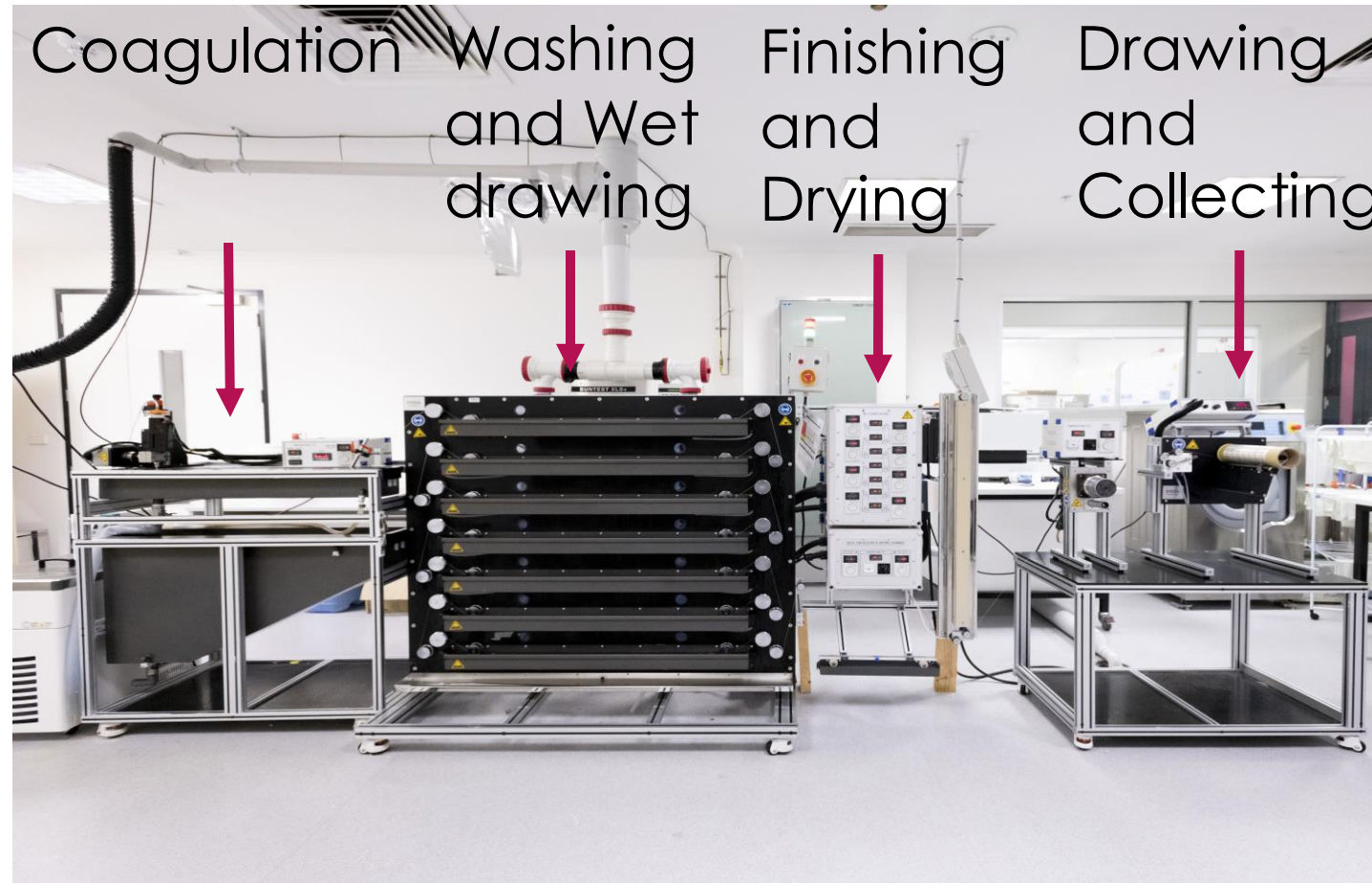
Translational research – Bench to Pilot Scale



# Fibre and Yarn Production



# Wet Spinning Line



# Sustainable Textiles



Food Waste



Fermentation



Regeneration



LEE MATHEWS



Textile Construction



Yarn Production



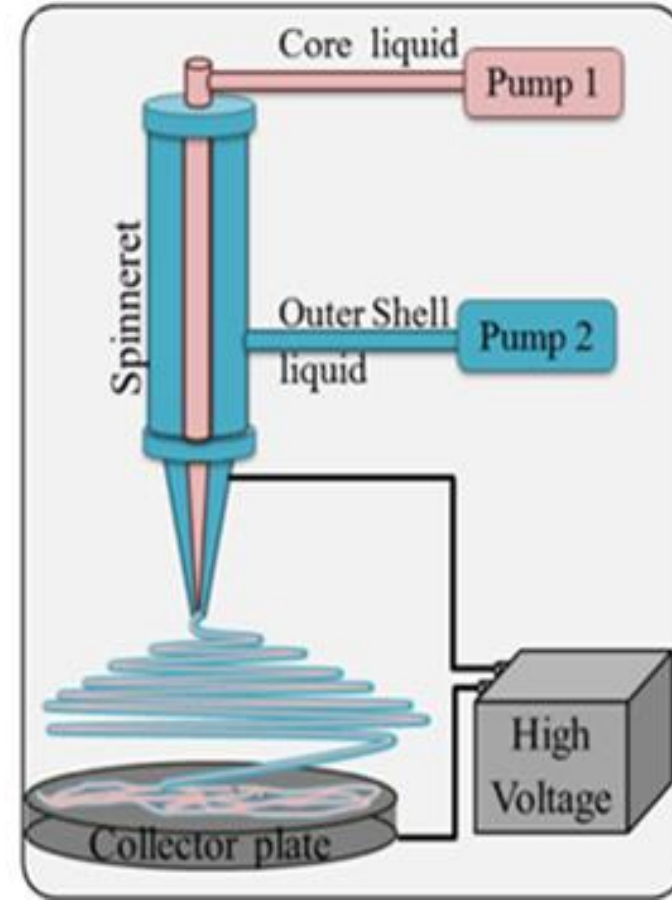
# Melt-Spinning



# Electrospinning

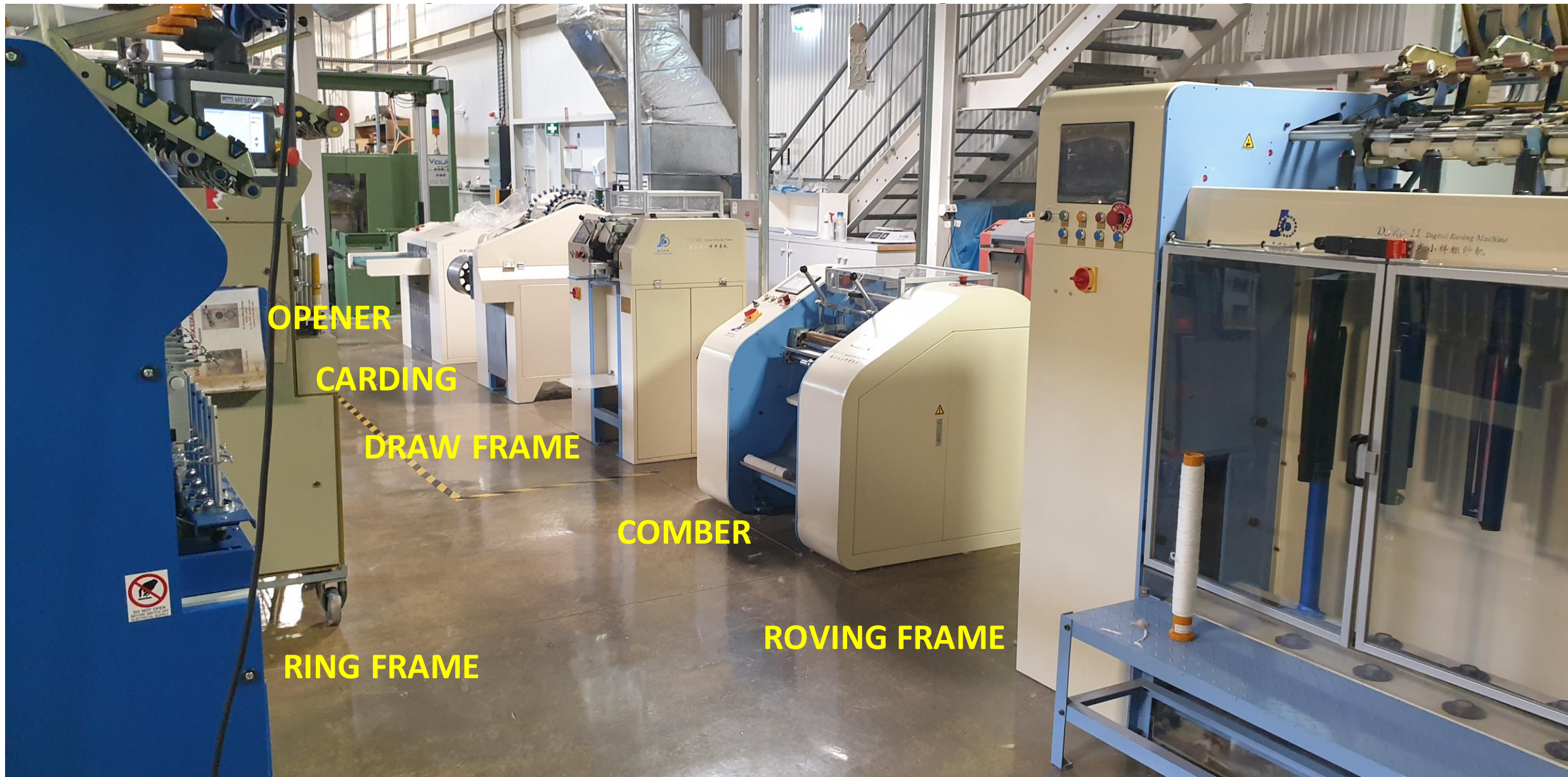


Holmarc Electrospinner



Core Shell Electrospinning





OPENER

CARDING

DRAW FRAME

COMBER

ROVING FRAME

RING FRAME



FUTURE FIBRES GROUP



ARC Research Hub for FUTURE FIBRES

Fibre technologies that make a material difference.



FUTURE FIBRES FACILITY



# Textile Production





Drum Warper



Sectional Warper





Weaving Looms







Shima Seiki Knitting Machines

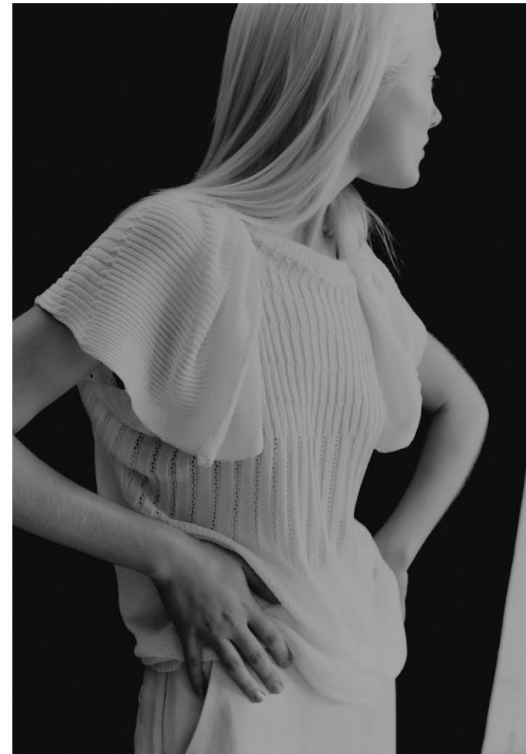
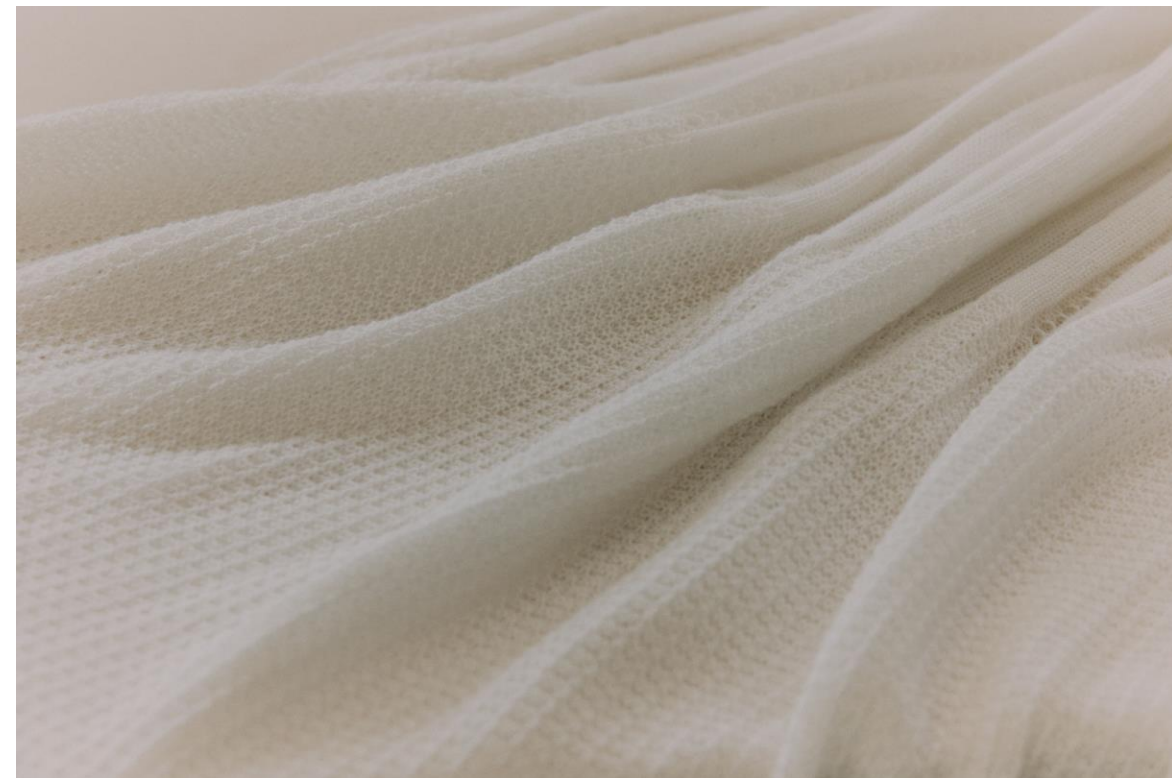




Sample Knitting Machines



# The Garment





# Nonwoven Production Line



